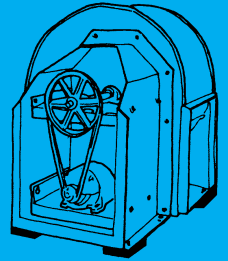
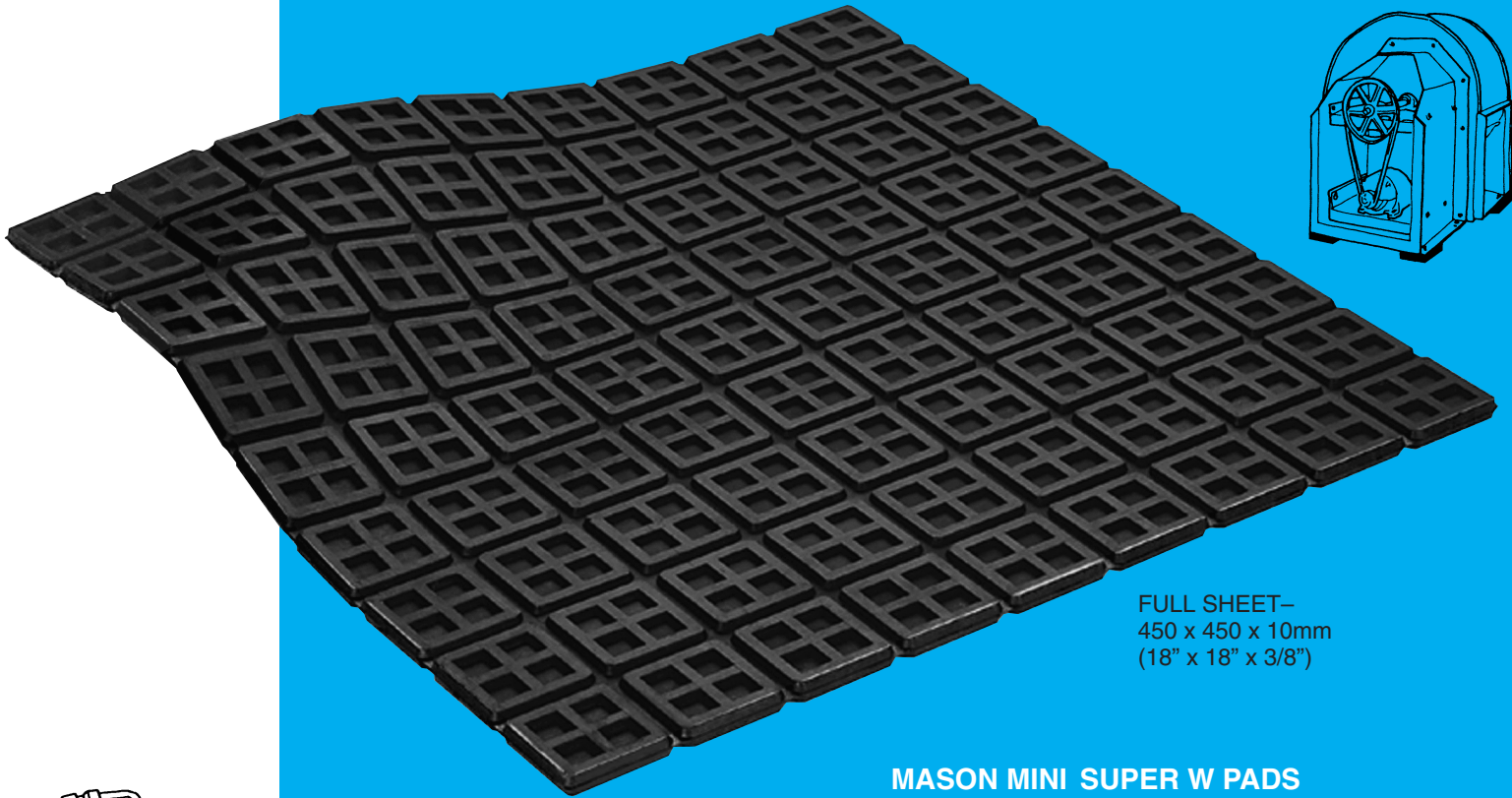


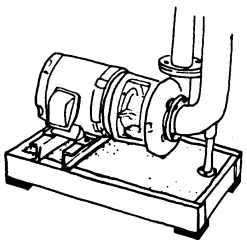
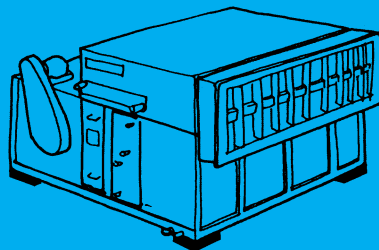
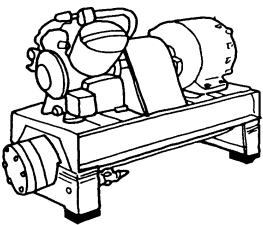


MASON

MINI SUPER W PADS



FULL SHEET—
450 x 450 x 10mm
(18" x 18" x 3/8")



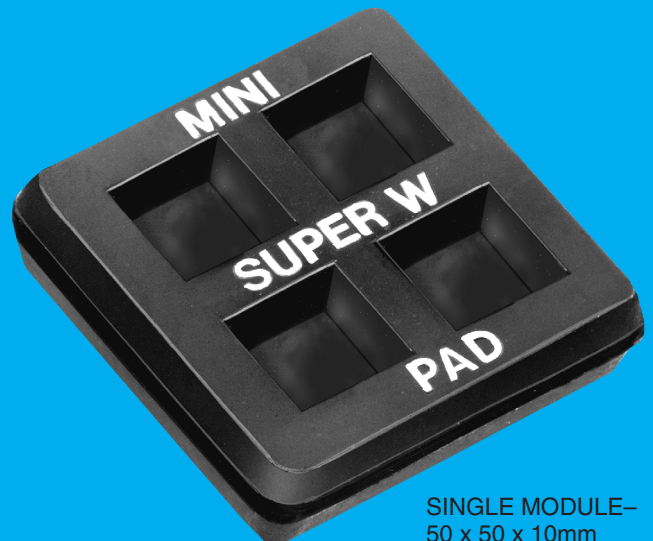
MASON MINI SUPER W PADS ARE MOLDED IN—

- **Natural Rubber** for maximum resilience and vibration isolation. Contains anti-oxidants and anti-ozonants to improve aging.
- **Standard Neoprene** for moderate oil resistance.

Standard size 450 x 450 x 10mm (18" x 18" x 3/8") consists of 81 - 50mm (2") modules. The 50mm (2") squares are separated by a thin web that is easily cut to provide evenly dimensioned pads such as 50 x 50mm (2" x 2"), 50 x 100mm (2" x 4"), 100 x 100mm (4" x 4"), 150 x 200mm (6" x 8"), etc. Our Mini Super W pad is one of the thickest, most versatile and efficient pads on the market.

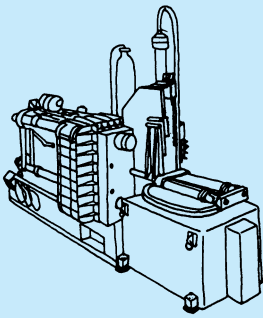
METRIC EQUIVALENTS

- 450 x 450 x 10mm = 18" x 18" x 3/8"
- 50 x 50 x 10mm = 2" x 2" x 3/8"
- 50 x 100 x 10mm = 2" x 4" x 3/8"
- 100 x 100 x 10mm = 4" x 4" x 3/8"
- 150 x 200 x 10mm = 6" x 8" x 3/8"

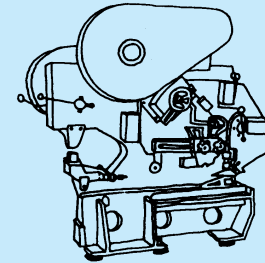
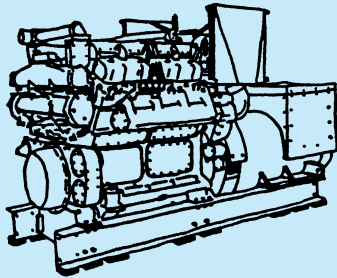
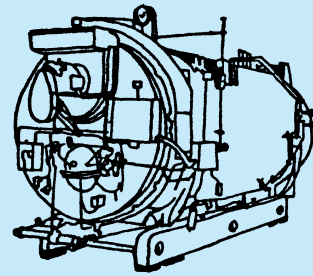


SINGLE MODULE—
50 x 50 x 10mm
(2" x 2" x 3/8")

Pads can be used to reduce noise, high frequency vibration and impact from typical machines as follows:

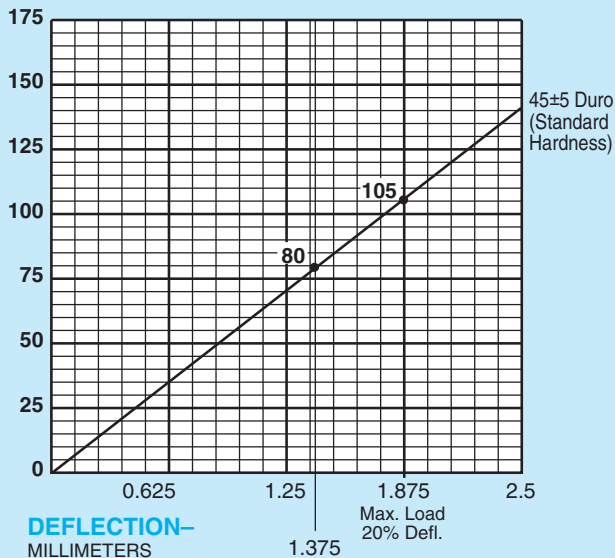


- Chillers
- Compressors
- HVAC Units
- Vent Sets
- Pumps
- Motor Generators
- Transformers
- Diesel Generators
- Punch Presses
- Lathes
- Saws
- Power Presses
- Drill Presses



METRIC UNITS LOAD

kgs / 50mm square

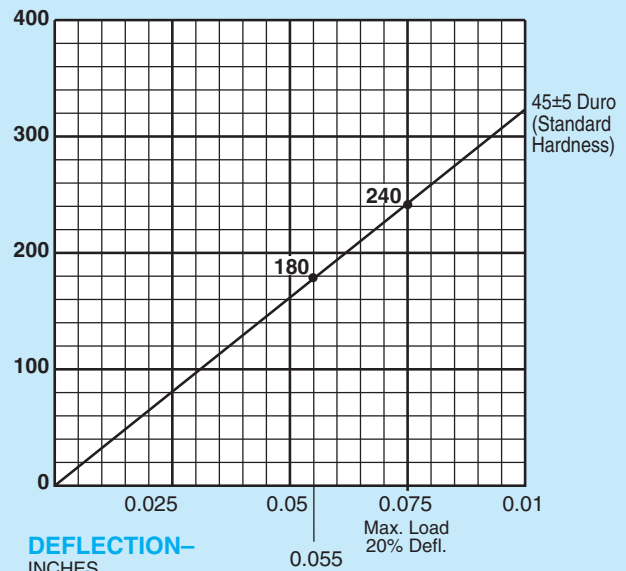


DEFLECTION—
MILLIMETERS

Recommended Maximum Load
15% Deflection

AMERICAN or BRITISH UNITS LOAD

lbs / 2" square



DEFLECTION—
INCHES

Recommended Maximum Load
15% Deflection



PADS MAY BE STACKED WITH 1.6MM (16 GAUGE) SHIMS BETWEEN LAYERS FOR INCREASED DEFLECTION.

Mini Super W Pads should be used in full squares. Select the minimum number of squares required and design pad to the most convenient square or rectangle. The use of additional squares results in more conservative loading.

Metric Units Example—

Load is 5000 kgs. 45 Duro capacity is 80 kgs.
5000/80 = 62.5 squares (minimum).

Pad may be 8 modules x 8 modules (400 x 400mm)
or 7 modules x 10 modules (350 x 500mm)
or 6 modules x 11 modules (300 x 550mm) etc.

British Units Example—

Load is 980 lbs. 45 Duro capacity is 180 lbs.
980/180 = 5.44 squares (Use 6 square modules).

Pad may be 2 modules x 3 modules (4" x 6")
or 1 module x 6 modules (2" x 12")

MINI SUPER W LOAD RATINGS PER SQUARE

DUROMETER	15% DEFLECTION	
	Load per 50x50mm Square (kgs)	Load per 2" x 2" Square (lbs)
Standard 45±5	80	180



MASON INDUSTRIES, INC.

350 Rabro Drive, Hauppauge, NY 11788 • 631/348-0282 • FAX 631/348-0279
2101 W. Crescent Ave., Suite D, Anaheim, CA 92801 • 714/535-2727 • FAX 714/535-5738
Email info@Mason-Ind.com or info@MasonAnaheim.com • Website www.Mason-Ind.com