



MASON INDUSTRIES, Inc.

Manufacturers of Vibration Control Products

350 Rabro Drive
Hauppauge, NY 11788
631/348-0282
FAX 631/348-0279
Info@Mason-Ind.com
www.Mason-Ind.com

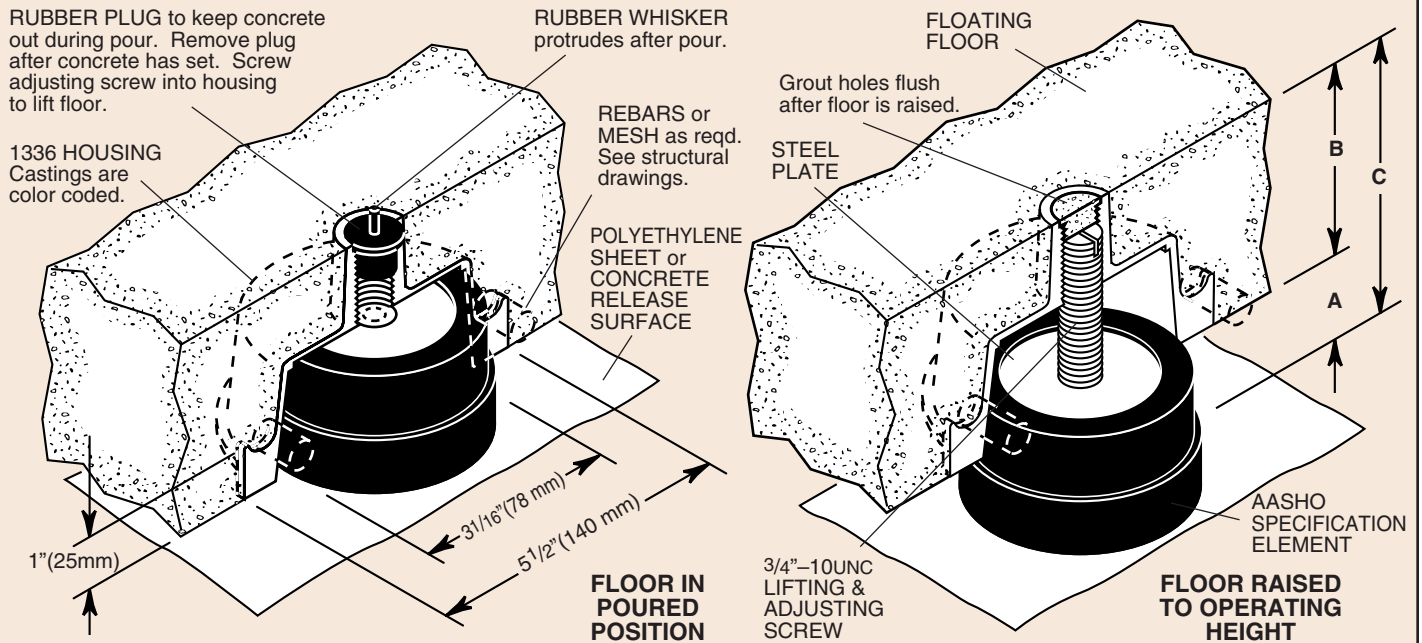
2101 W. Crescent Ave., Suite D
Anaheim, CA 92801
714/535-2727
FAX 714/535-5738
Info@MasonAnaheim.com
www.MasonAnaheim.com

FLOATING FLOOR NEOPRENE JACK-UP MOUNTINGS

TYPE

FSN

DATA SHEET DS-50-3



TYPE FSN RATINGS (1336 Housing)

Type	Size	EAFM Neoprene Element			Load Capacity				Casting Color Code
		Element No.	Color Mark	Duro-meter ±5	0.2" Defl (lbs)	0.3" Defl (lbs)	5 mm Defl (kgs)	8 mm Defl (kgs)	
FSN*-(3,4,5,6)	500	12530	Green	40	335	500	152	227	Green
	700	12530	Red	50	470	700	214	318	Red
	900	12530	White	60	600	900	273	409	White
	1300	11901	Red	50	875	1300	398	591	Orange
	1700	11901	White	60	1140	1700	518	773	Yellow

A Air Gap	B Floor Thickness	C Overall Height
Most Common 1" or 2" (25 or 50mm)	3"(75mm)– Minimum 4"(100mm)– Most Common	Air Gap Plus Floor Thickness
Occasionally 3" or 4" (75 or 100mm)	5"(125mm)– Seldom 6"(150mm)– Common	
	Thicker Floors or Fractional Dimensions As Required	

*FSN Housing Height matches floor thickness. Housing suffix indicates housing height, i.e. FSN4 indicates 4"(100mm) floor and housing; FSN6, 6"(150mm) floor and housing, etc.
NOTE: Castings can be modified for floors over 6"(150mm) thick.

NEOPRENE PHYSICAL PROPERTIES

Grade (Durometer A).....	40	50	60
Original Physical Properties			
Hardness ASTM D-676	40±5	50±5	60±5
Tensile strength, minimum psi ASTM D-412	2000	2500	2500
Elongation at break, minimum percent	450	400	350
Accelerated Test to Determine Long-term Aging Characteristics			
Oven Aging– 70 Hrs./212°F., ASTM D-573			
Hardness, points change, maximum	+15	+15	+15
Tensile strength, percent change, maximum	±15	±15	±15
Elongation at break, percent change, maximum	-40	-40	-40
Ozone (1 PPM in air by volume– 20% strain– 100 ±2°F.–ASTM D-1149) 100 Hours.....		No cracks	
Compression Set (22 Hrs./158°F., ASTM D-395–Method B) Percent, maximum	30	25	25

Mounts are designed for 0.3"(8 mm) maximum deflection under constant load. Temporary loadings may greatly exceed these numbers without damage or permanent set.

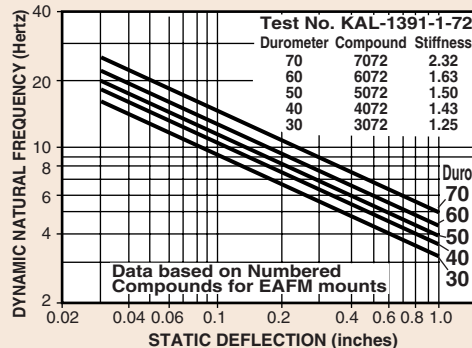
All mountings are molded to AASHO specifications. Elastomer may be Neoprene or AASHO equivalent.

The theoretical natural frequency of mounts without Dynamic Stiffness correction:

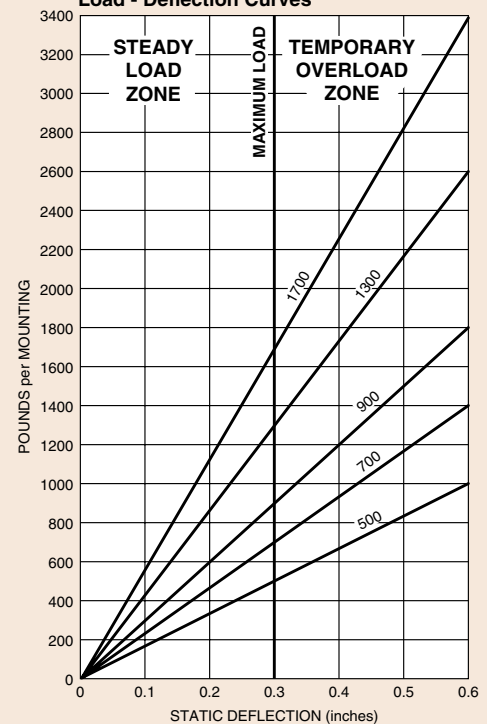
At 0.2"(5 mm) - 7.0 Hz
At 0.3"(8 mm) - 5.7 Hz

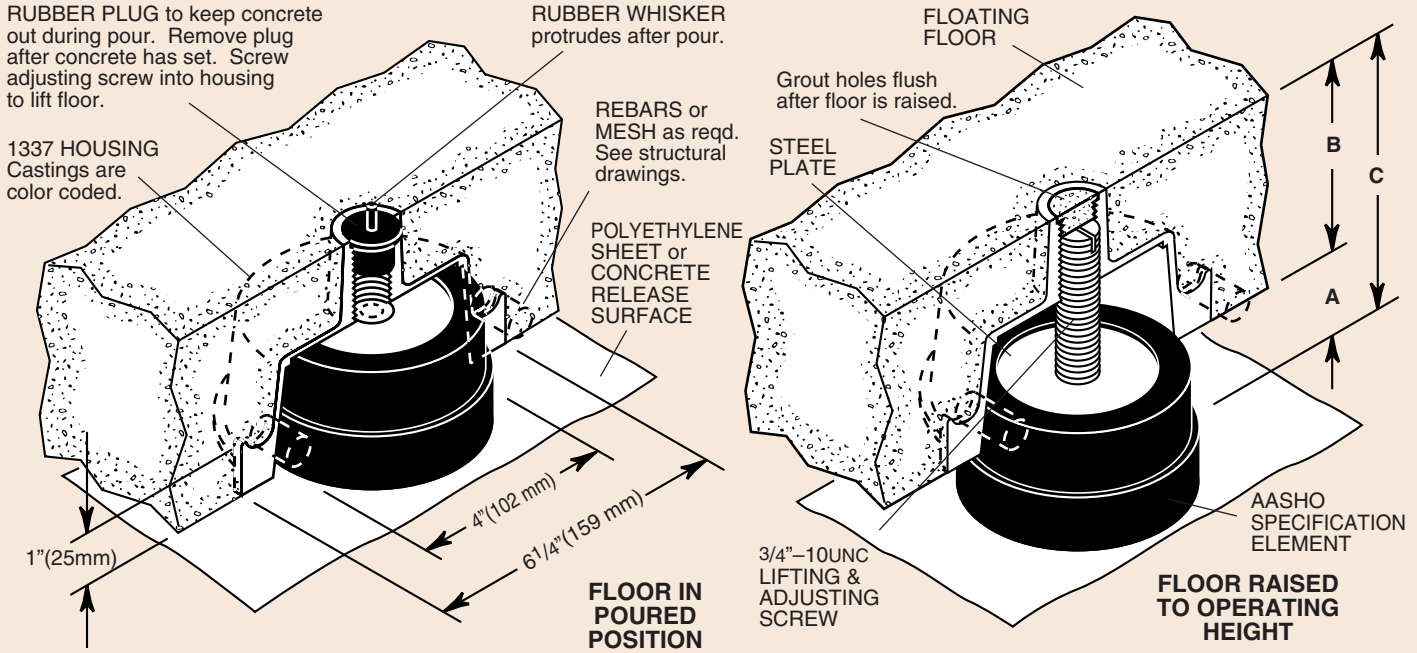
Actual frequencies may be read from the chart.

Dynamic Stiffness & Frequency Curves



Load - Deflection Curves





TYPE FSN RATINGS (1337 Housing)

Type	Size	EAFM Neoprene Element			Load Capacity				Casting Color Code
		Element No.	Color Mark	Duro-meter ±5	0.2" Defl (lbs)	0.3" Defl (lbs)	5 mm Defl (kgs)	8 mm Defl (kgs)	
FSN* - (3,4,5,6)	2800	12147	Red	50	1875	2800	852	1273	Black
	3500	12147	White	60	2350	3500	1068	1591	Gray

*FSN Housing Height matches floor thickness. Housing suffix indicates housing height, i.e. FSN4 indicates 4" (100mm) floor and housing; FSN6, 6" (150mm) floor and housing, etc.
NOTE: Castings can be modified for floors over 6" (150mm) thick.

A Air Gap	B Floor Thickness	C Overall Height
Most Common 1" or 2" (25 or 50mm)	3" (75mm) - Minimum 4" (100mm) - Most Common 5" (125mm) - Seldom 6" (150mm) - Common	Air Gap Plus Floor Thickness
Occasionally 3" or 4" (75 or 100mm)	Thicker Floors or Fractional Dimensions As Required	

NEOPRENE PHYSICAL PROPERTIES

Grade (Durometer A).....	40	50	60
Original Physical Properties			
Hardness ASTM D-676.....	40±5	50±5	60±5
Tensile strength, minimum psi ASTM D-412.....	2000	2500	2500
Elongation at break, minimum percent.....	450	400	350
Accelerated Test to Determine Long-term Aging Characteristics			
Oven Aging - 70 Hrs./212°F., ASTM D-573			
Hardness, points change, maximum.....	+15	+15	+15
Tensile strength, percent change, maximum.....	±15	±15	±15
Elongation at break, percent change, maximum.....	-40	-40	-40
Ozone (1 PPM in air by volume - 20% strain - 100 ±2°F. - ASTM D-1149)			
100 Hours.....		No cracks	
Compression Set (22 Hrs./158°F., ASTM D-395-Method B)			
Percent, maximum.....	30	25	25

Mounts are designed for 0.3" (8 mm) maximum deflection under constant load. Temporary loadings may greatly exceed these numbers without damage or permanent set.

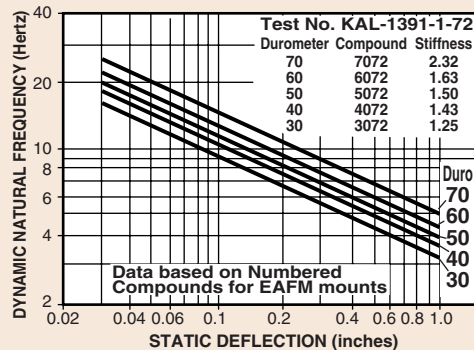
All mountings are molded to AASHO specifications. Elastomer may be Neoprene or AASHO equivalent.

The theoretical natural frequency of mounts without Dynamic Stiffness correction:

At 0.2" (5 mm) - 7.0 Hz
At 0.3" (8 mm) - 5.7 Hz

Actual frequencies may be read from the chart.

Dynamic Stiffness & Frequency Curves



Load - Deflection Curves

