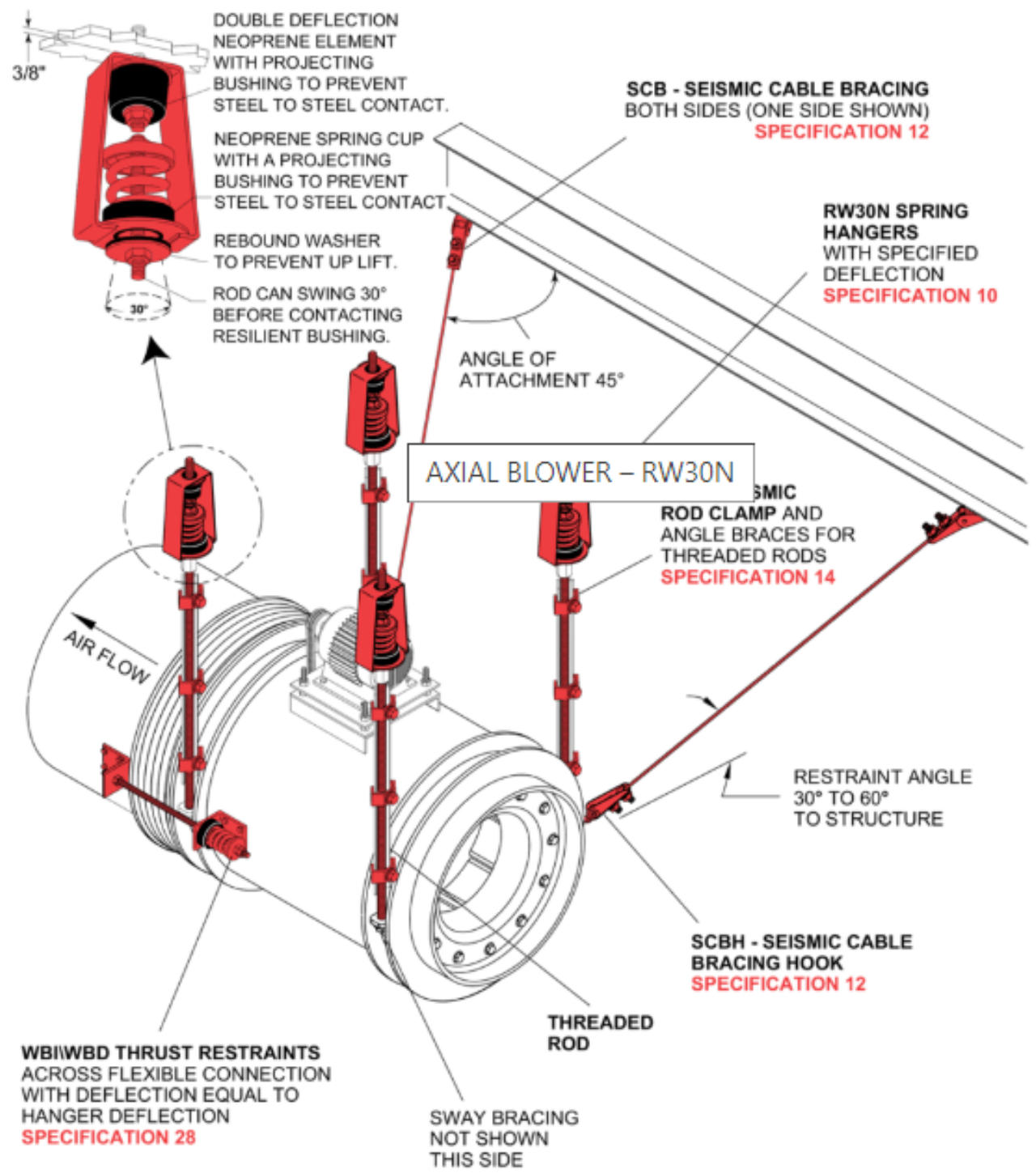
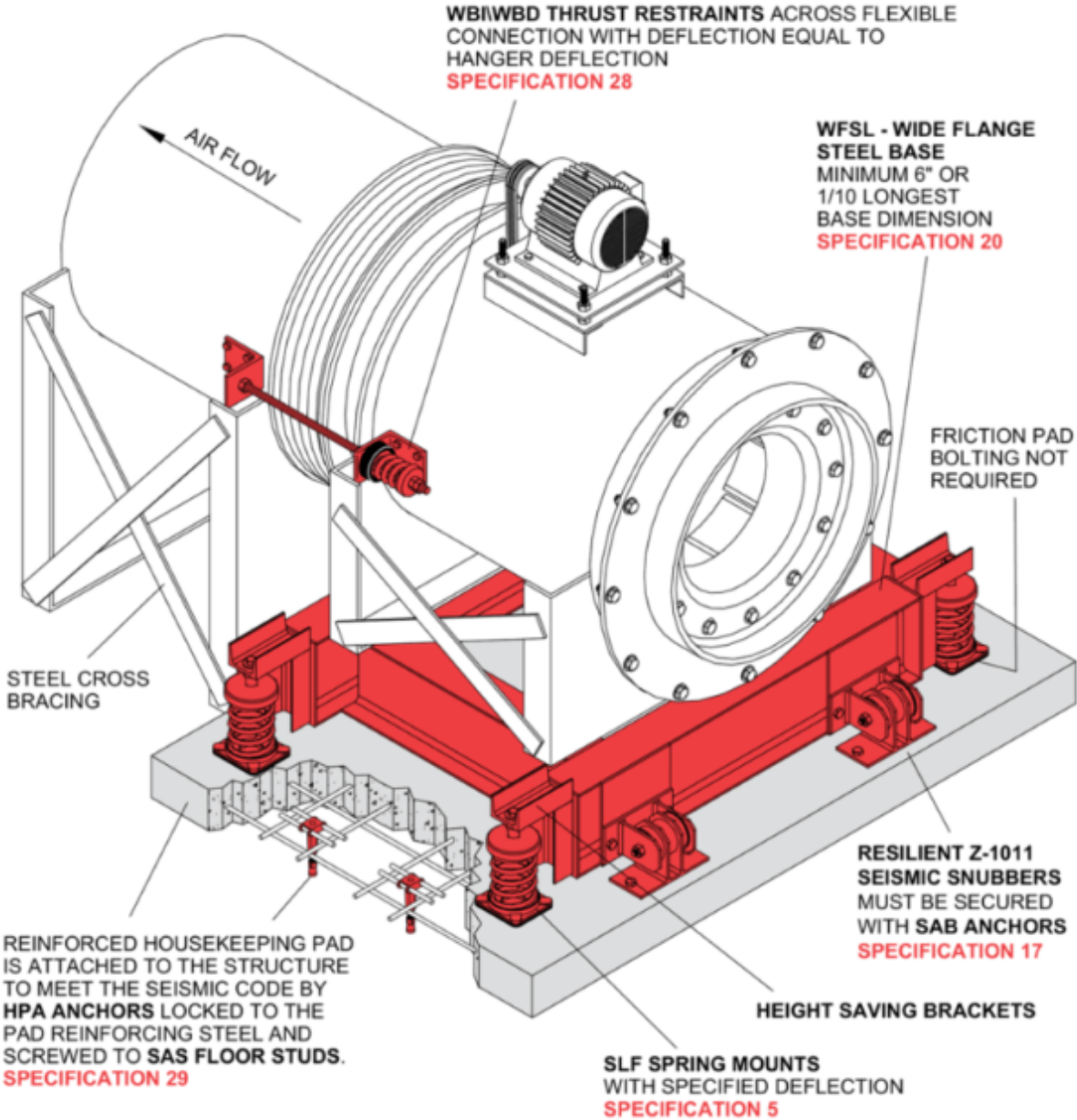


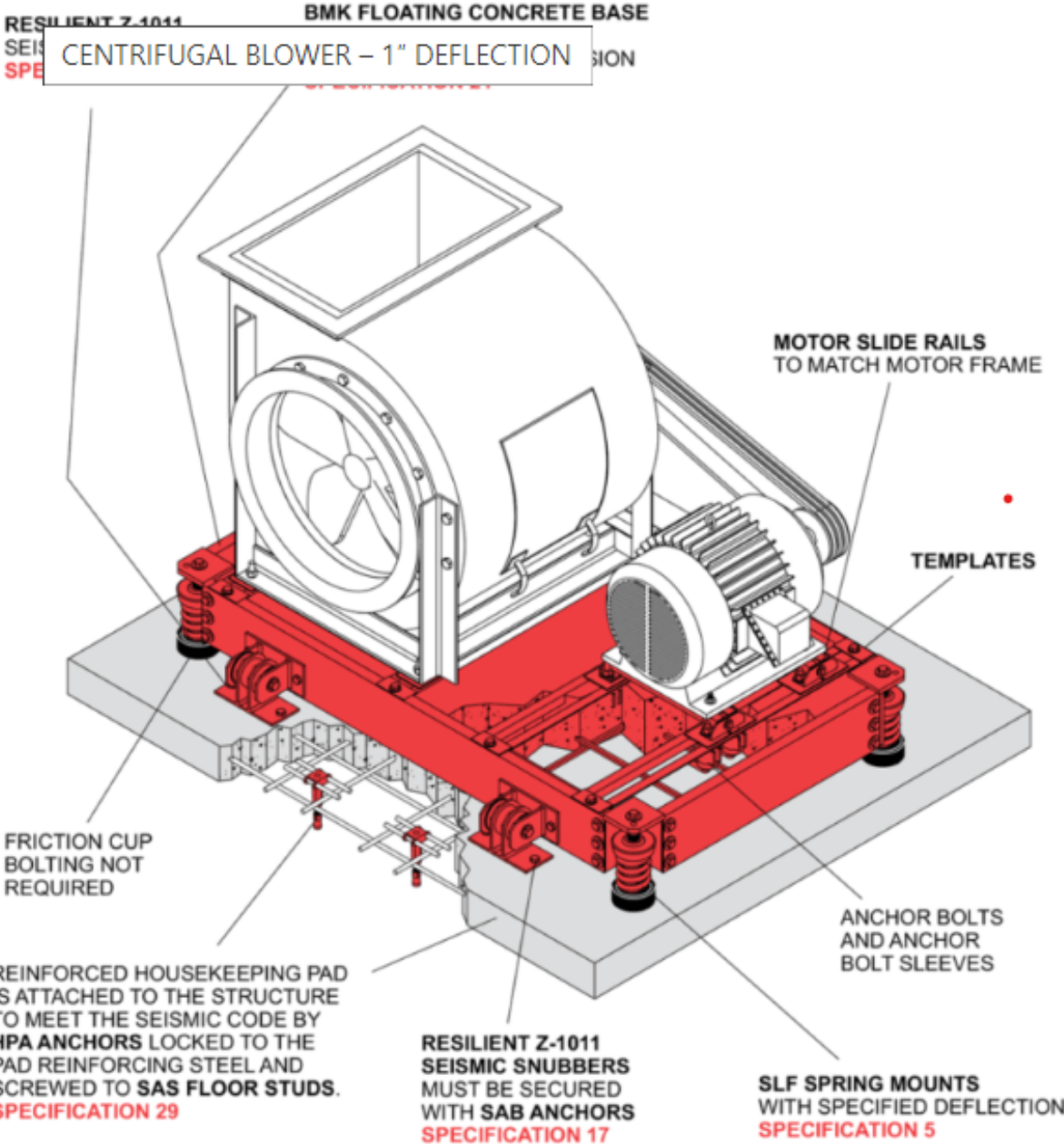
AXIAL BLOWER with WBI/WBD Thrust Restraints suspended by RW30N Hangers and restrained by SCB Cable Assemblies.



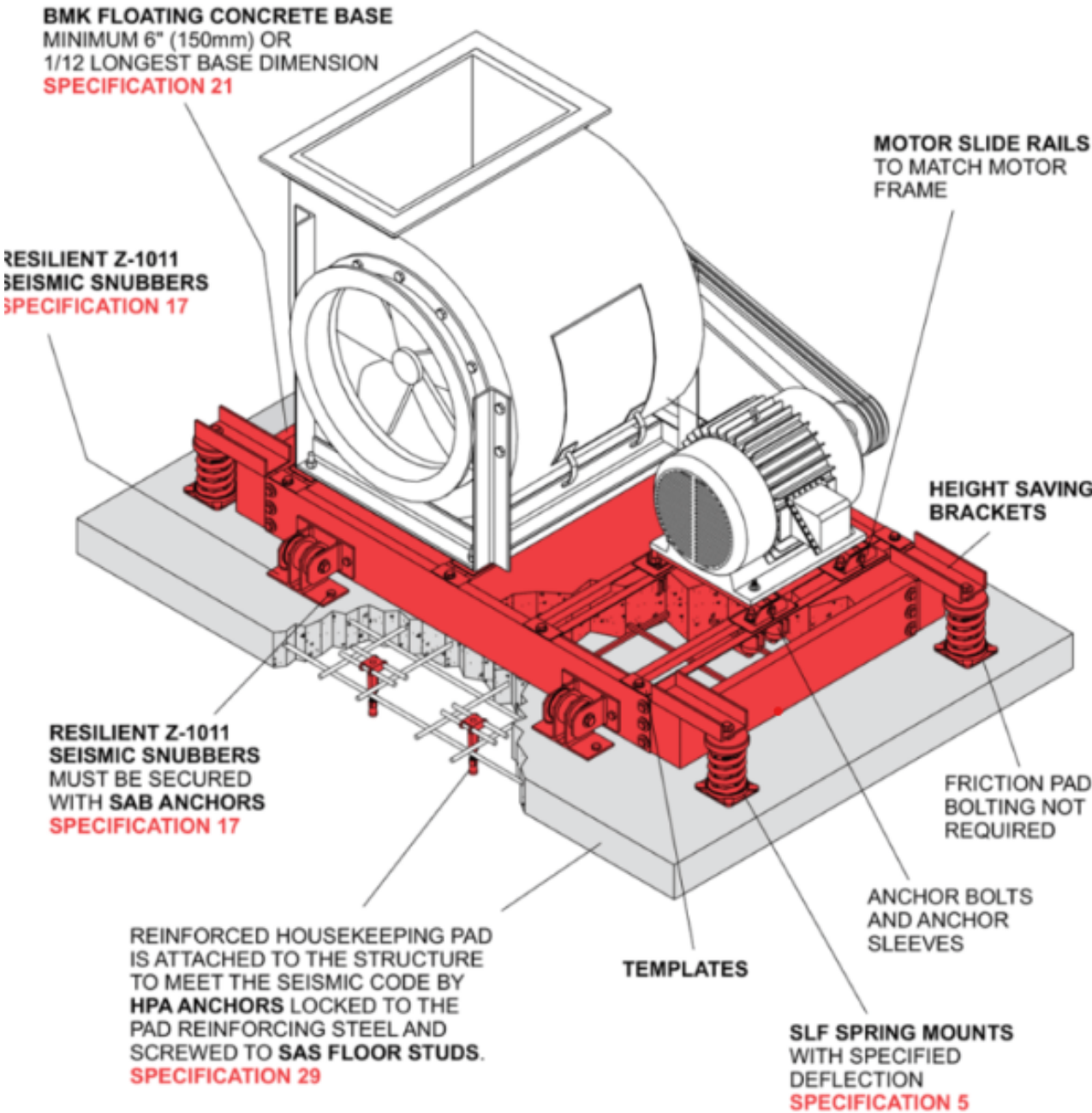
AXIAL BLOWER with WBI/WBD Thrust Restraints mounted on WFSL Base with height saving brackets, high deflection SLF Mounts and Z-1011 Seismic Restraints. Reinforced housekeeping pad secured by HPA Anchors.



CENTRIFUGAL BLOWER on concrete filled BMK Base with built in corners, 1" deflection SLF Spring Mounts and Z-1011 Seismic Restraints. Reinforced housekeeping pad secured by HPA Anchors.



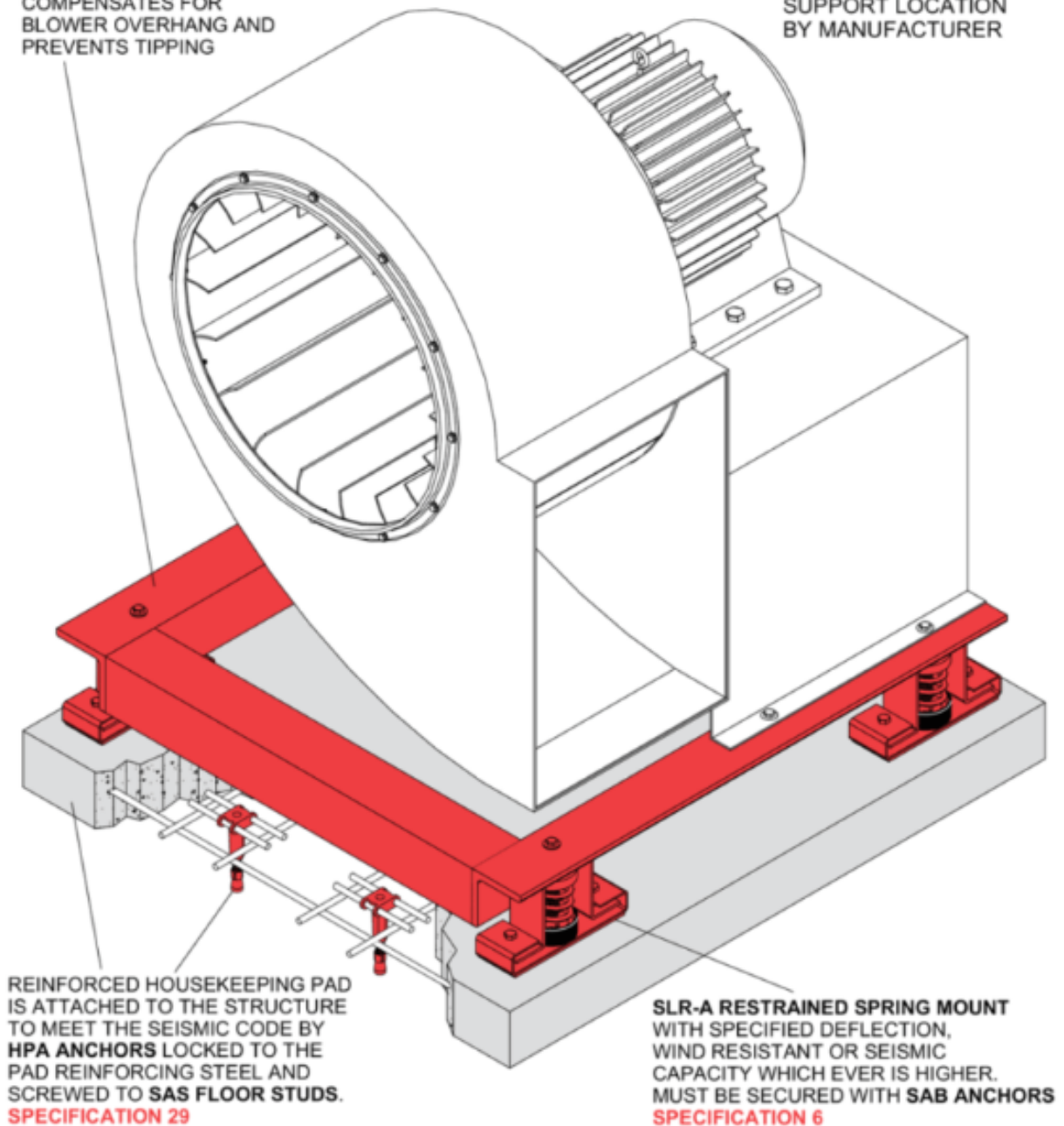
CENTRIFUGAL BLOWER on concrete filled BMK Base with height saving brackets, high deflection SLF Spring Mounts and Z-1011 Seismic Snubbers. Reinforced housekeeping pad secured by HPA Anchors.



DIRECT DRIVE BLOWER bolted to MS-SLR Steel Angle Base supported by SLR-A Restrained Spring Mounts. Reinforced housekeeping pad secured by HPA Anchors.

MS-SLR - STEEL ANGLE BASE
COMPENSATES FOR
BLOWER OVERHANG AND
PREVENTS TIPPING

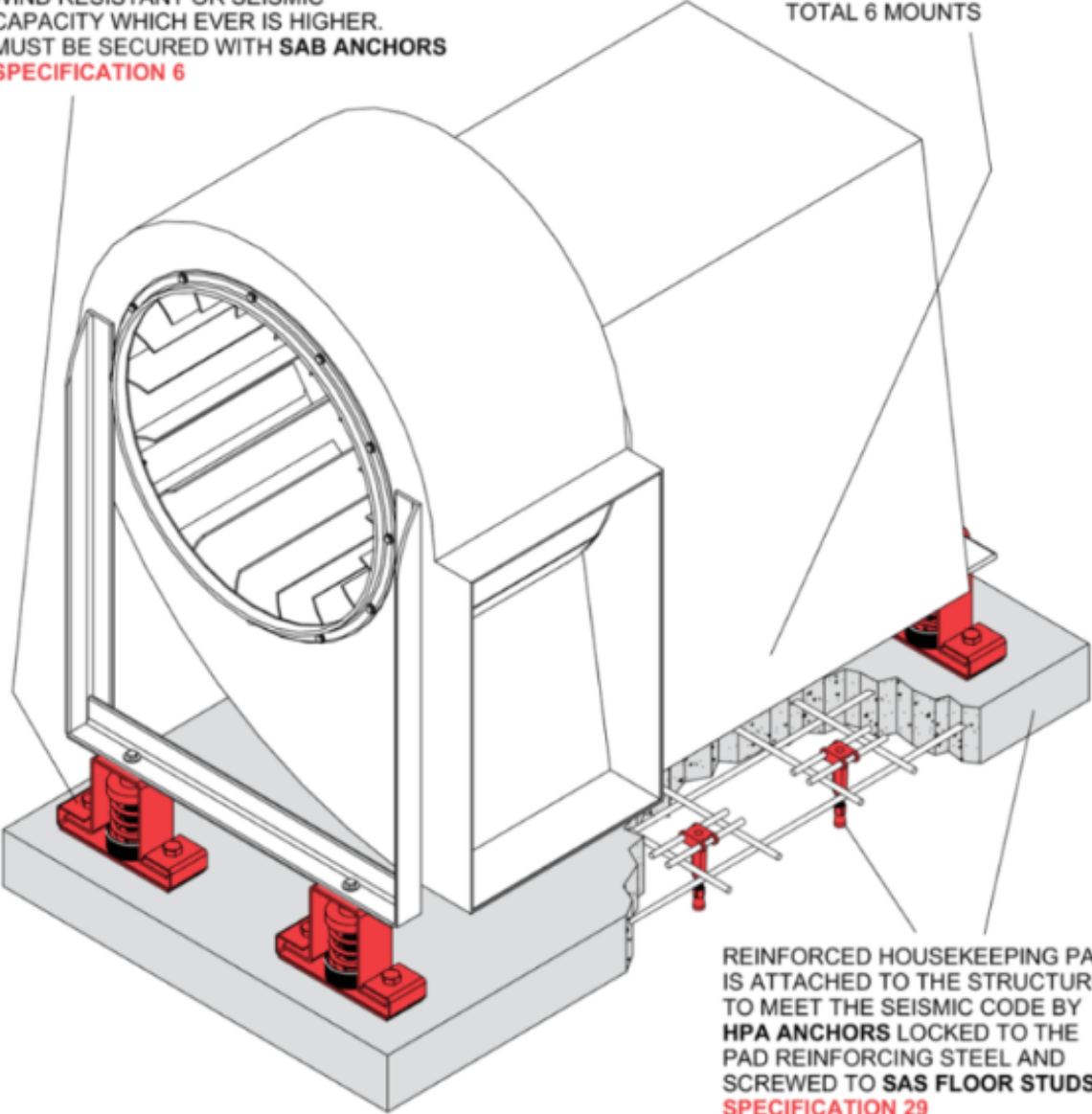
**NOTE: NO OUTBOARD
SUPPORT LOCATION
BY MANUFACTURER**



UTILITY BLOWER directly mounted on seismically restrained SLR-A Mounts. Reinforced housekeeping pad secured by HPA Anchors. Also useful for non seismic outdoor windy locations.

SLR-A SPRING MOUNT WITH SPECIFIED DEFLECTION, WIND RESISTANT OR SEISMIC CAPACITY WHICH EVER IS HIGHER. MUST BE SECURED WITH **SAB ANCHORS** **SPECIFICATION 6**

NOTE: MOUNT LOCATION OMITTED BECAUSE OF SECTION TOTAL 6 MOUNTS



REINFORCED HOUSEKEEPING PAD IS ATTACHED TO THE STRUCTURE TO MEET THE SEISMIC CODE BY **HPA ANCHORS** LOCKED TO THE PAD REINFORCING STEEL AND SCREWED TO **SAS FLOOR STUDS**. **SPECIFICATION 29**