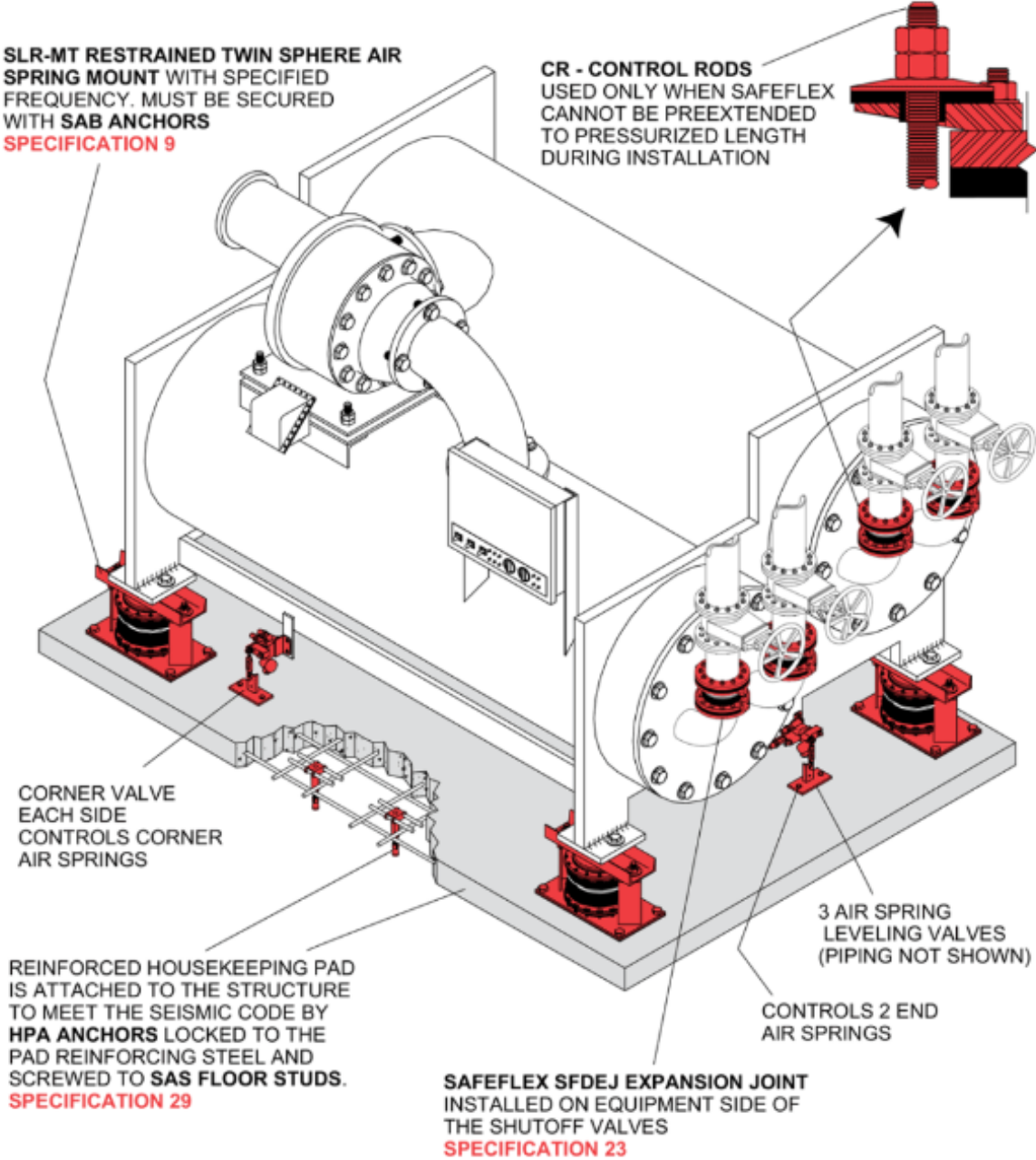


CENTRIFUGAL CHILLER directly mounted on seismically rated SLR-MT Restrained Twin Sphere Air Spring Mounts. Reinforced housekeeping pad secured by HPA Anchors. SAFEFLEX Expansion Joints are installed in pipelines to reduce blade frequency vibration and noise and to allow for seismic displacement.



CENTRIFUGAL CHILLER on WFSL Base with height saving brackets and high deflection SLF Mounts and Z-1011 Seismic Restraints. Reinforced housekeeping pad secured by HPA Anchors. SAFEFLEX Expansion Joints are installed in pipelines to reduce blade frequency vibration and noise and to allow for seismic displacement.

